



Delivering Airport Climate Action



Olivier Jankovec
ACI EUROPE Director General

COP28 - Global Sustainable Aviation Forum

6 December 2023, Dubai

CARBON MANAGEMENT & AIRPORTS

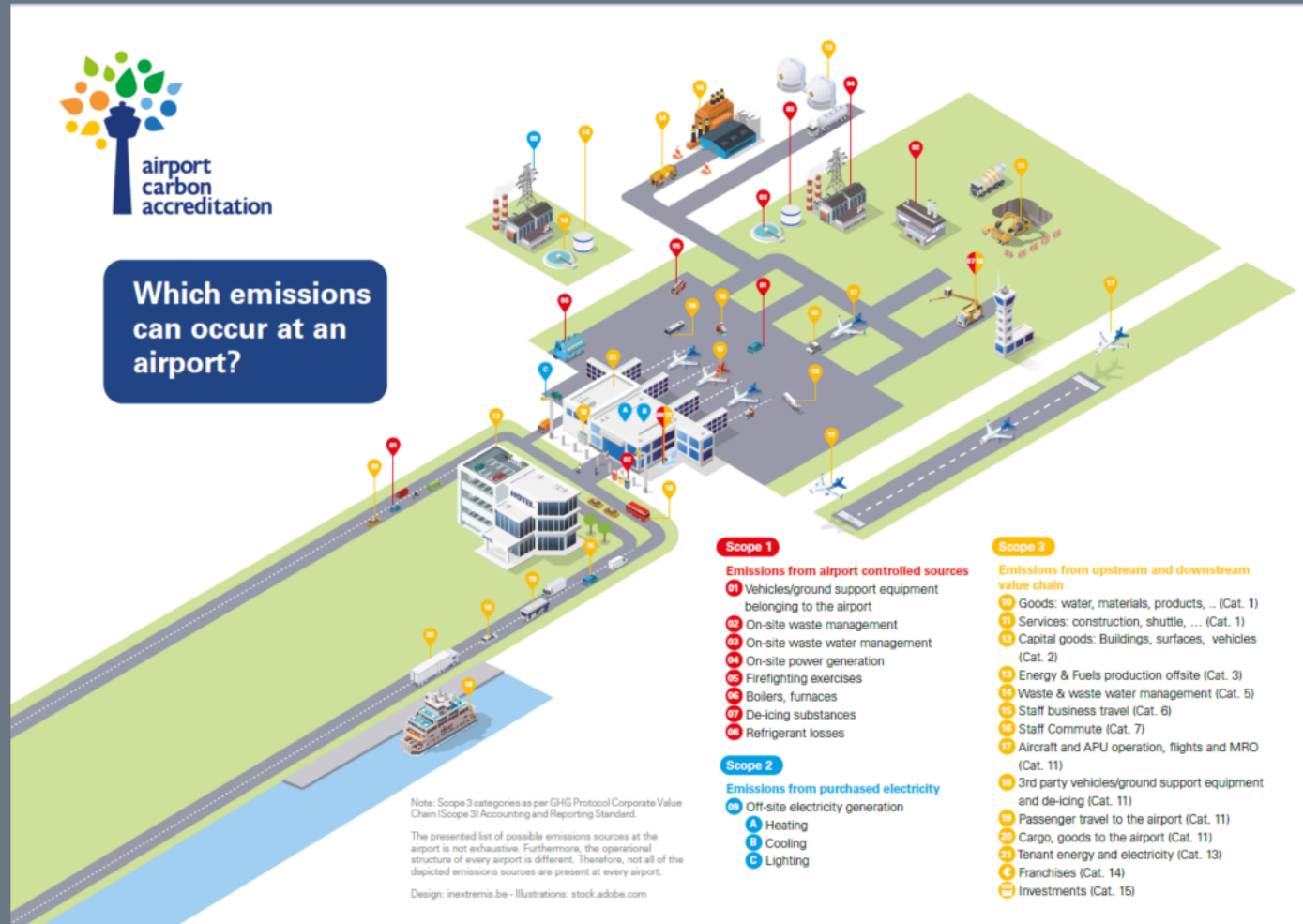


- June 2009



• The standard for airport carbon management

- Mapping & scoping airports' emissions



Which emissions can occur at an airport?

Note: Scope 3 categories as per GHG Protocol Corporate Value Chain (Scope 3) Accounting and Reporting Standard.

The presented list of possible emissions sources at the airport is not exhaustive. Furthermore, the operational structure of every airport is different. Therefore, not all of the depicted emissions sources are present at every airport.

Design: inextremis.be - Illustrations: stock.adobe.com

Scope 1

Emissions from airport controlled sources

- 01 Vehicles/ground support equipment belonging to the airport
- 02 On-site waste management
- 03 On-site waste water management
- 04 On-site power generation
- 05 Firefighting exercises
- 06 Boilers, furnaces
- 07 De-icing substances
- 08 Refrigerant losses

Scope 2

Emissions from purchased electricity

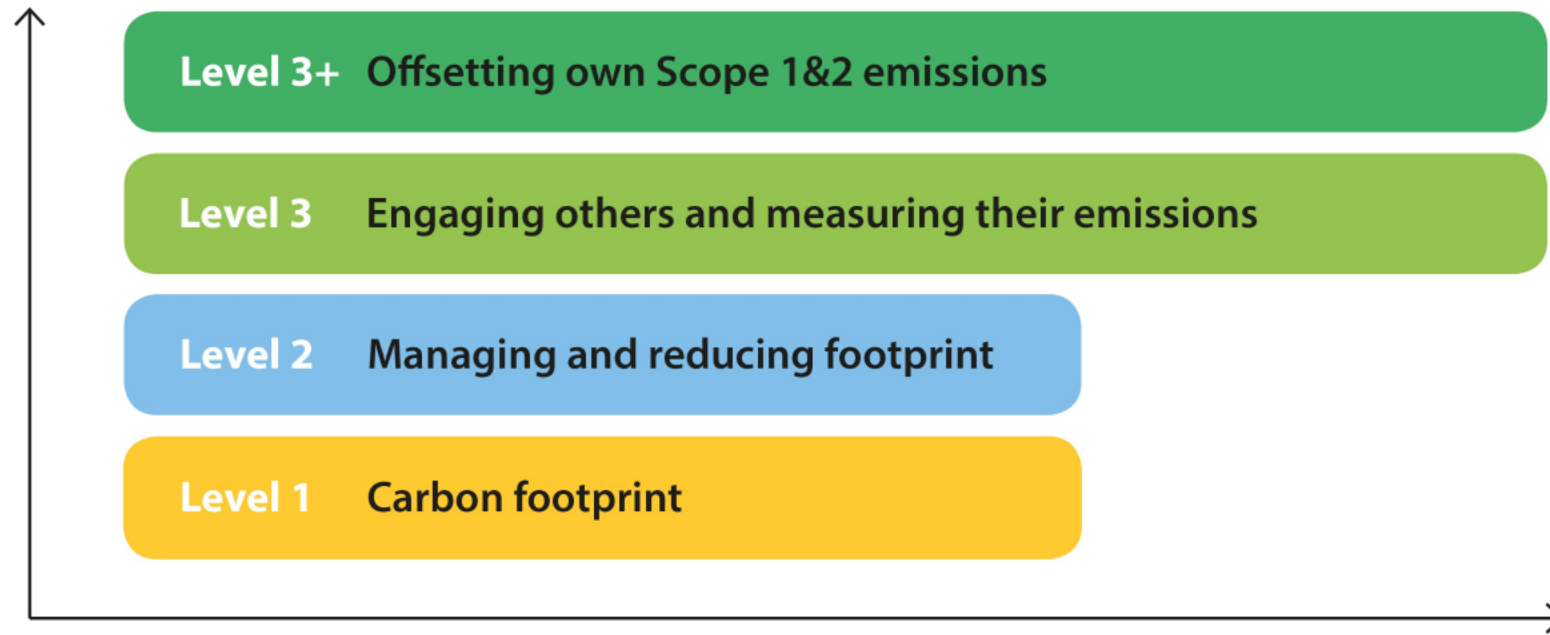
- 09 Off-site electricity generation
 - A Heating
 - B Cooling
 - C Lighting

Scope 3

Emissions from upstream and downstream value chain

- 10 Goods: water, materials, products, ... (Cat. 1)
- 11 Services: construction, shuttle, ... (Cat. 1)
- 12 Capital goods: Buildings, surfaces, vehicles (Cat. 2)
- 13 Energy & Fuels production offsite (Cat. 3)
- 14 Waste & waste water management (Cat. 5)
- 15 Staff business travel (Cat. 6)
- 16 Staff Commute (Cat. 7)
- 17 Aircraft and APU operation, flights and MRO (Cat. 11)
- 18 3rd party vehicles/ground support equipment and de-icing (Cat. 11)
- 19 Passenger travel to the airport (Cat. 11)
- 20 Cargo, goods to the airport (Cat. 11)
- 21 Tenant energy and electricity (Cat. 13)
- € Franchises (Cat. 14)
- Investments (Cat. 15)

- Initial certification levels



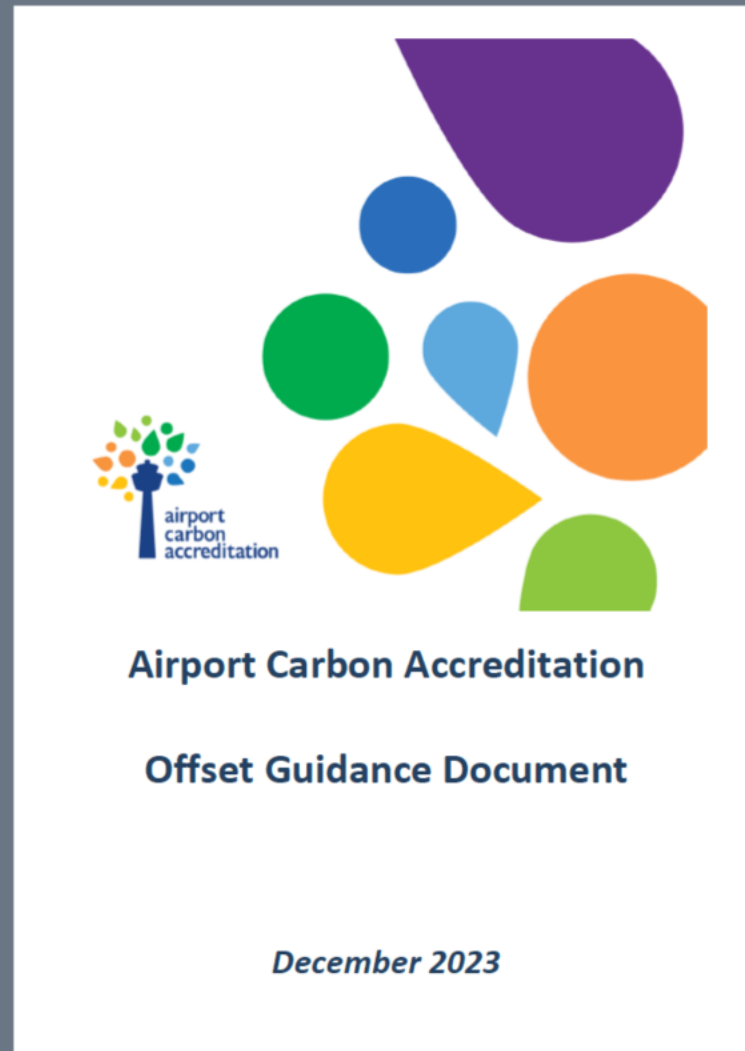
Scope 1 & 2 - Emissions from activities which the airport company are directly responsible for

Scope 3 - Emissions from activities which the airport does not directly manage but can guide and influence

- Independent management, oversight & transparency



- Following science/societal developments
 - Tightening offsetting requirements & Guidance on removals



- Aligning with the Paris Agreement = New certification levels

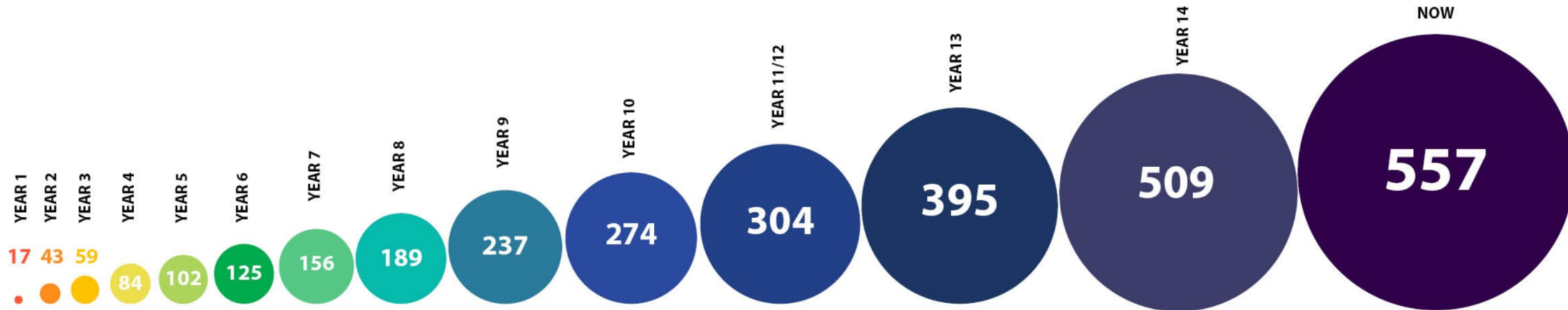


- Absolute CO2 reductions
- Long-term target aligned with IPCC 1.5°C & 2°C pathways
- Extended carbon emissions reporting and reduction requirements
- Deeper ties with business partners to deliver absolute CO2 reductions across the entire airport site

A GLOBAL CLIMATE ACTION COMMUNITY

- From 17 to 557 certified airports

& 45.9% of global traffic



2022/2023: -1,155,962 tonnes of CO2 (-16.5%)



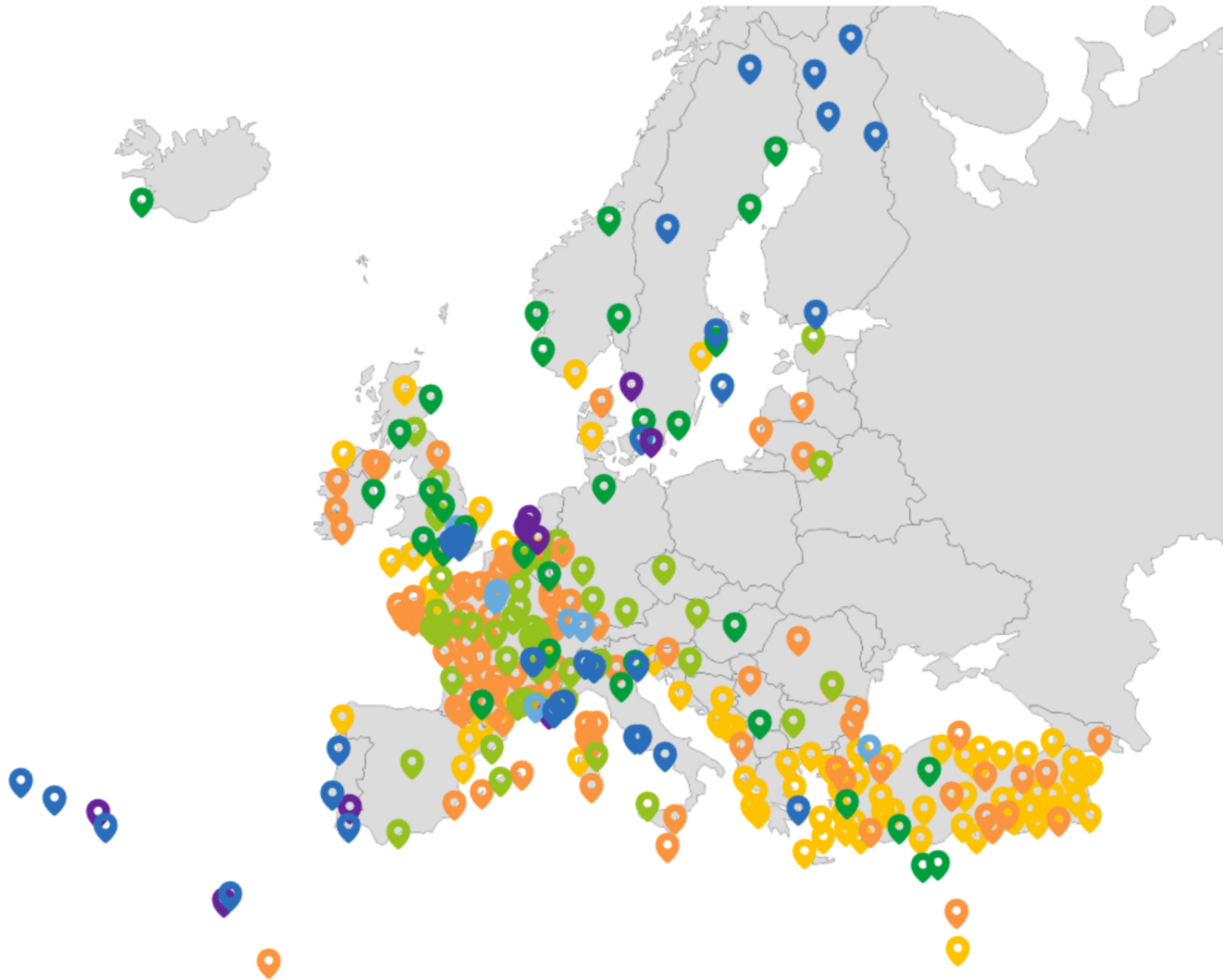
-1,155,962 tonnes of CO₂e



is equivalent to removing
250,000 cars from the road

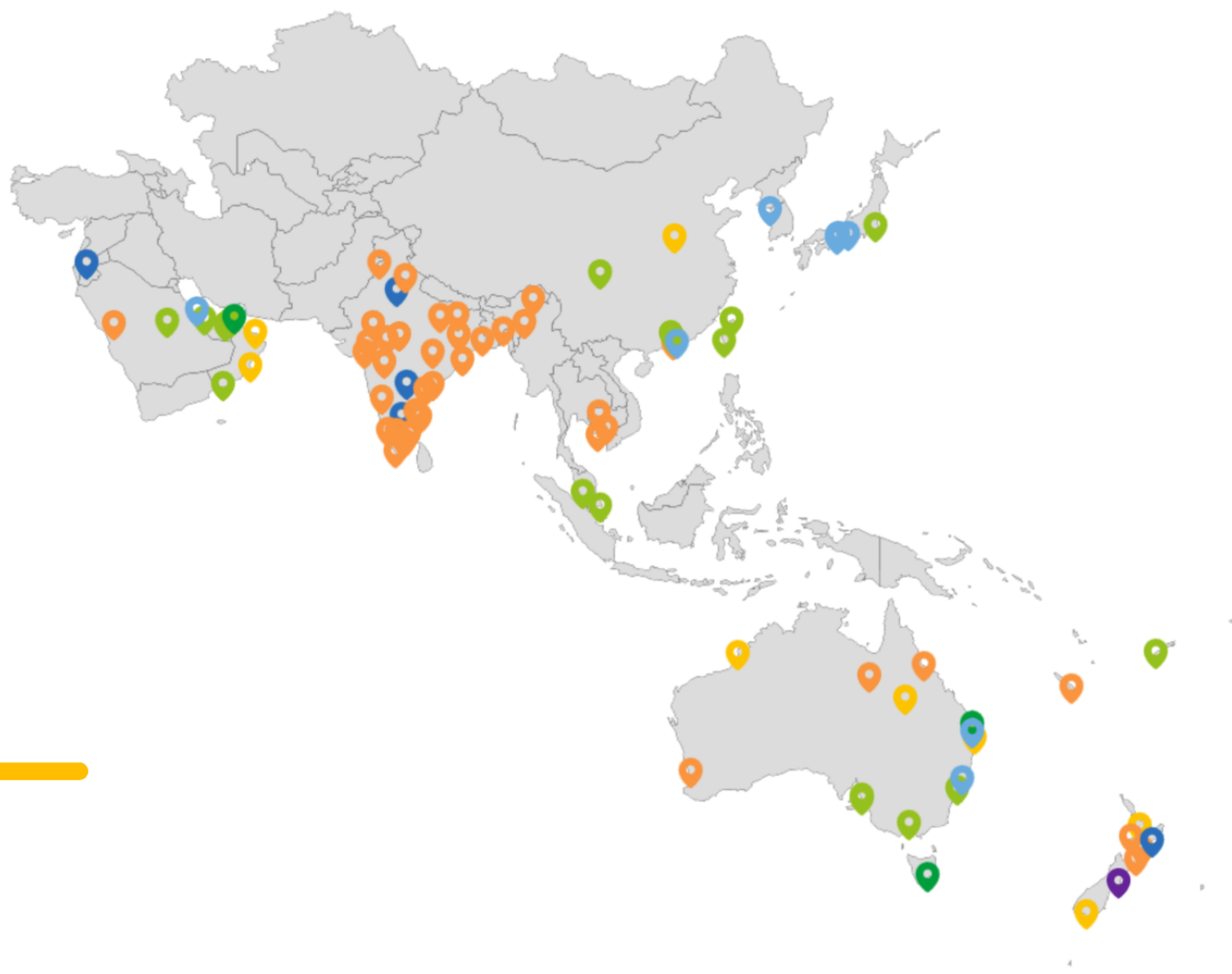


291
in Europe



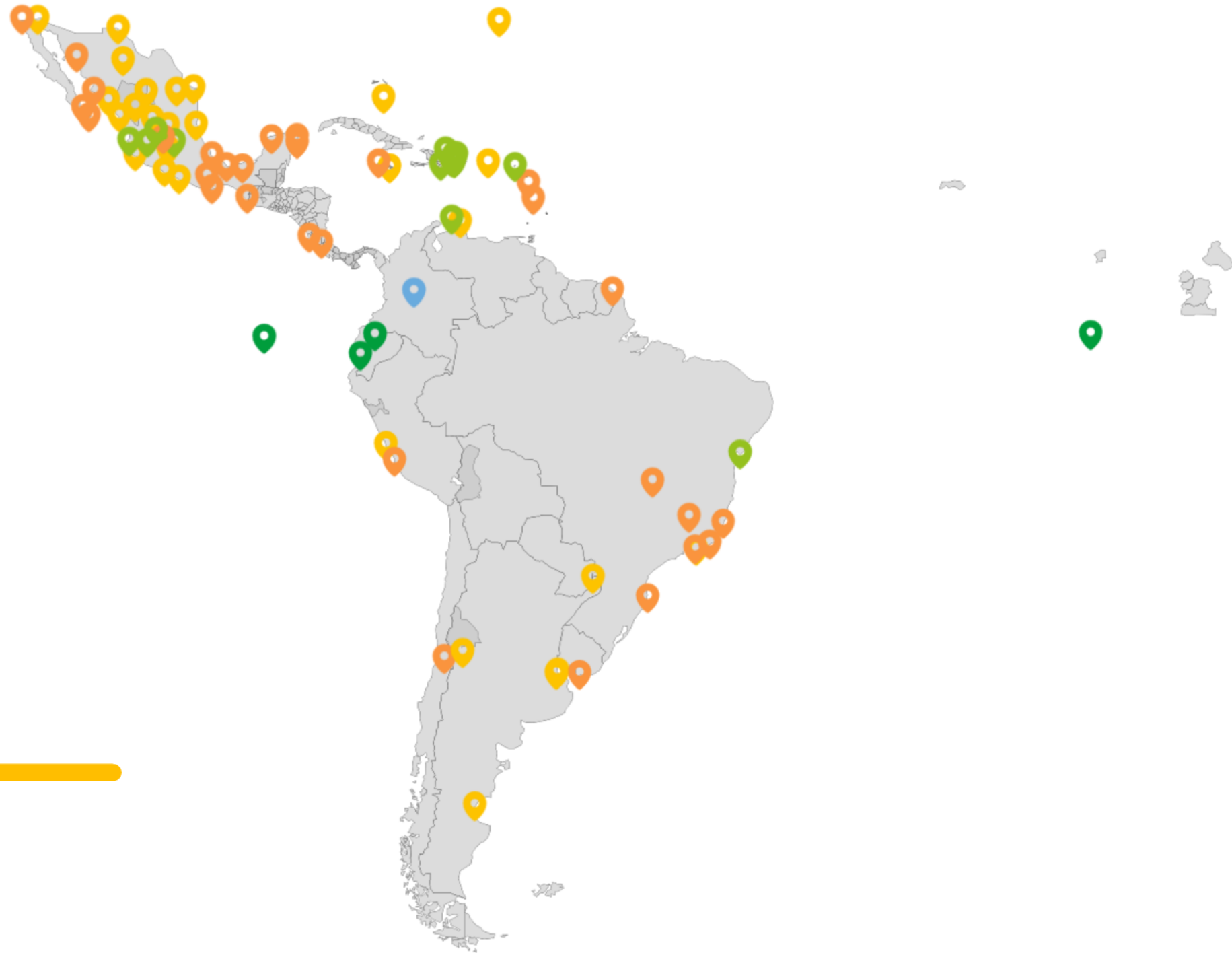
86

in Asia-Pacific
& Middle East



76

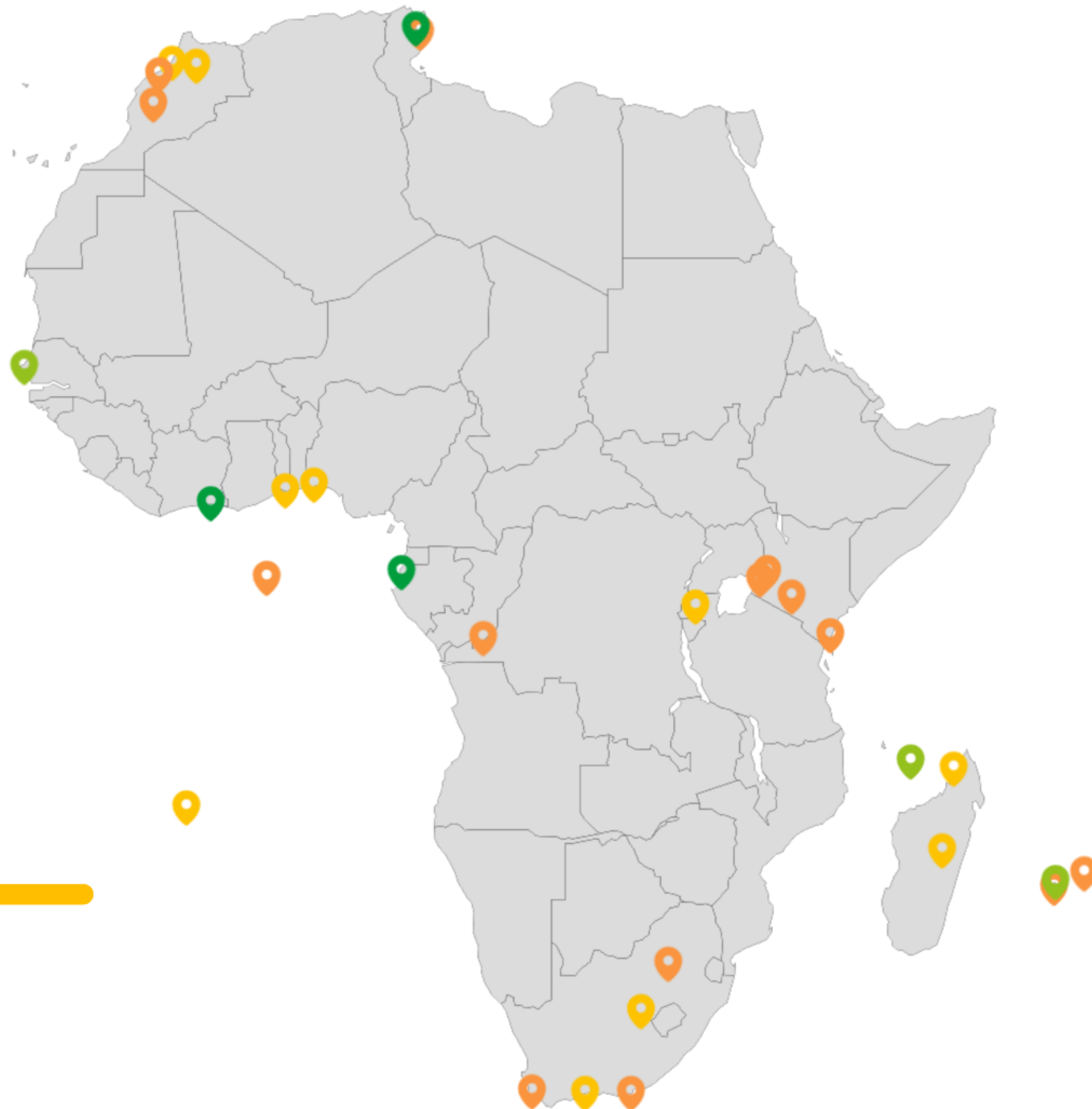
in Latin America
& the Caribbean



74
in North
America



30
in Africa



- Climate credentials & recognition



United Nations

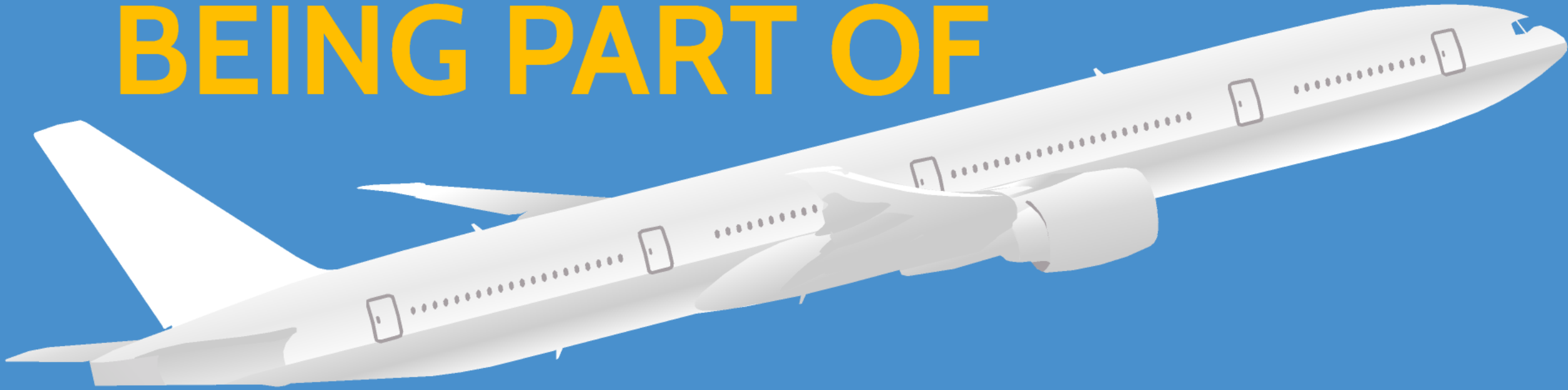
Framework Convention on
Climate Change

*"We commend airports for their leadership [through **Airport Carbon Accreditation**] a signal that can set an example for others to follow with ambitious climate action."*



*"**Airport Carbon Accreditation** is a highly significant initiative by airports for meaningful and measurable action in addressing their greenhouse gas emissions."*

BEING PART OF



THE SOLUTION

**The
Economist**

Delta's beta: how much worse to come?

Where South Africa goes next

Chinese v American antitrust

The ethics of primate research

JULY 24TH-30TH 2021

No safe place

The 3°C future



***"Humanity is on thin ice...
And that ice is melting fast."***

Antonio Guterres, UN Secretary General

- Supporting business transformation
& new airport value creation model



TODAY...

LEVEL 5



- Achieve & maintain Net Zero CO₂ in Scopes 1 and 2
- Provide a management plan to maintain the Net Zero status
- Perform a full Scope 3 emissions calculation
- Provide a roadmap to achieve Net Zero for Scope 3 emissions

LEVEL 5 PIONEERS

Schiphol

EindhovenAirport 

**Rotterdam
The Hague
Airport** 

**2N2
BEJA
AIRPORT**
POWERED BY VINCI AIRPORTS 

**2N2
MADEIRA
AIRPORT**
POWERED BY VINCI AIRPORTS 

**2N2
PONTA DELGADA
AIRPORT**
POWERED BY VINCI AIRPORTS 

**CHRISTCHURCH
AIRPORT** 

 **Swedavia
Airports**

Göteborg Landvetter
& Malmö

 **TOULON HYÈRES
AIRPORT**
POWERED BY VINCI AIRPORTS 





www.airportcarbonaccreditation.org



@AirportCO2